



Arca, walnut, brushed aluminum

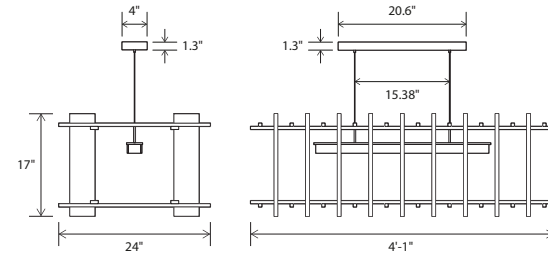


Arca, walnut, brushed aluminum

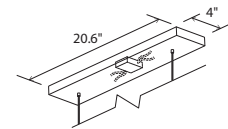
The Arca is an experiment with density and mass. As one moves around the room, the fixture morphs from a commanding presence of solid walnut into a graceful bar of light surrounded by an elegant porous cage.

Nick Sheridan
Designer

Arca linear pendant



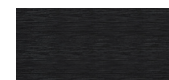
Dimensions: 4'-1" x 24", 17"
 Materials: solid wood, aluminum, polymer
 Product weight: 20 lb
 Light source: integrated LED
 Light output: 1720 Lumens (source)
 Light color: 2700 K or 3500 K
 Color accuracy: 90+ CRI
 Power usage: 16 W
 Dimmable (see driver below)
 Linear canopy included
 Canopy dimensions: 20.6" x 4", 1.3"
 Canopy finish matches fixture's metal finish
 Wood canopy covers are available:
 Walnut (CM-001) cover: part # 60-130-005W
 Dark stained walnut (CM-002) cover:
 part # 60-130-005D
 See website for more canopy information
 72" drop length, field adjustable
 Suitable for a sloped ceiling
 Wood grain will vary
 Specifications subject to change



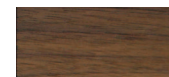
linear canopy,
brushed aluminum



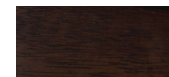
brushed aluminum
(CM-006)



black anodized aluminum
(CM-007)



walnut
(CM-001)



dark stained walnut
(CM-002)

MATERIAL & FINISH OPTIONS

Arca part # 07-120-

Metal Finish

brushed aluminum (CM-006) A
 black anodized aluminum (CM-007) B

Wood Body

walnut (CM-001) W
 dark stained walnut (CM-002) D

Lamping

2700 K LED 27
 3500 K LED 35

Driver

AC Input Voltage Range: 120-277 V
 120 V input: TRIAC, ELV & 0-10 V dimmable
 240 & 277 V input: only 0-10 V dimmable
 P1

Includes

polymer shade (CM-052)
 frosted acrylic diffuser (CM-024)

