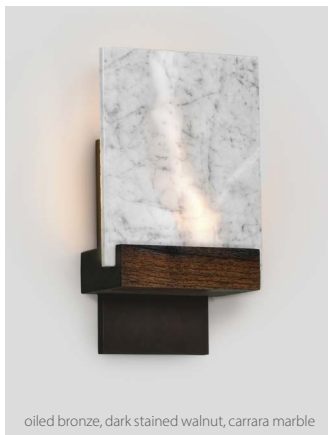




brushed brass, walnut, glacies glass



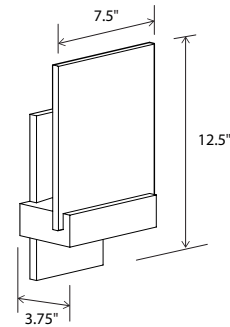
oiled bronze, dark stained walnut, carrara marble



brushed aluminum, walnut, glacies glass

The Fortis sconce is a quintessential example of collaborative design working well. New York-based Desiron and Cerno use a reductionist approach to modern luxury design. The quality of wood, metal, and glass combined with a minimalist composition create a sophisticated and functional sconce built with integrity. Caleb Siemon of Siemon & Salazar developed the glacial-looking piece of glass using recycled remnants from our glass-blowing studio. The glass's depth and texture elevate the fixture and make this work of art a dynamic design.

Fortis sconce



Dimensions: 12.5" x 7.5" x 3.75"
 Materials: solid wood, metal, marble option, glass option
 Product weight: 10 lb
 Light source: integrated LED
 Light output: 565 Lumens (source)
 Light color*: 2700 K or 3500 K
 Color accuracy: 90+ CRI
 Power usage: 7 W
 Dimmable (see driver below)
 Wood grain and stone will vary
 Specifications subject to change



brushed brass (CM-120)



distressed brass (CM-117)



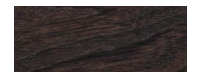
oiled bronze (CM-123)



brushed aluminum (CM-006)



walnut (CM-001)



dark stained walnut (CM-002)



carrara marble (CM-078)



glacies glass (CM-136)

MATERIAL & FINISH OPTIONS

Fortis part # 03-170-

Metal Finish

- brushed brass (CM-120) **R**
- distressed brass (CM-117) **D**
- oiled bronze (CM-123) **Z**
- brushed aluminum (CM-006) **A**

Wood Finish

- walnut (CM-001) **W**
- dark stained walnut (CM-002) **D**

Diffuser

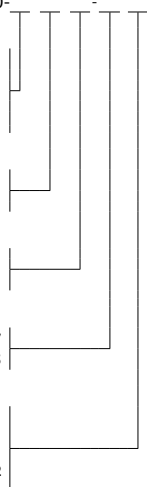
- carrara marble (CM-078) **C**
- glacies glass (CM136) **G**

Lamping*

- 2700 K LED **27**
- 3500 K LED **35**

Driver

- 120 V AC input voltage TRIAC & ELV dimming **P1**
- 277 V AC input voltage 0-10V dimming **P2**



J-box centered behind metal plate

*Available in 3000K, 4000K and other color temperatures upon request

