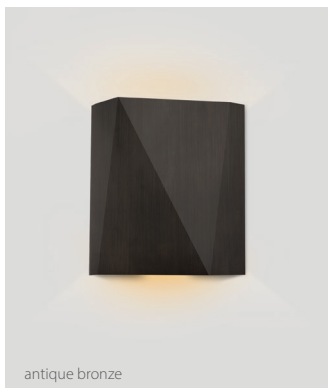




textured white powder coat



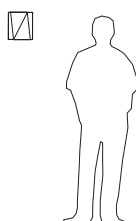
antique bronze



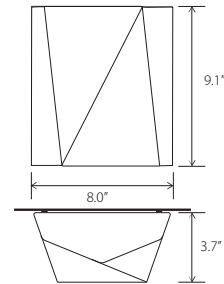
marine grade brushed stainless steel

Cerno's Calx Outdoor sconce is an existing design that we modified to withstand the elements. The materials and components were meticulously designed and engineered to comply and pass UL's wet location requirements.

Nick Sheridan,  
Designer



## Calx outdoor sconce



Dimensions: 9.1" x 8.0" x 3.7"  
 Product weight: 2 lb  
 Light source: integrated LED  
 Light output: see options below  
 Light color options: 2700 K, 3000K, 3500 K, or 4000 K  
 Color accuracy: 90+ CRI  
 Power usage: 14 W  
 Dimmable (see options below)  
 UL listed for wet locations, suitable for use indoor and outdoors  
 Antique bronze finish will vary  
 Antique bronze is a living finish and will change over time depending on environmental conditions  
 Specifications subject to change  
 Custom backlit address or room numbers available



### MATERIAL & FINISH OPTIONS

Calx outdoor sconce part # 03-244- -

#### Shade Material

marine grade brushed stainless steel (CM-102) **S**  
 antique bronze (CM-103) **R**  
 textured black powder coat (CM-099) **K**  
 textured white powder coat (CM-100) **Y**  
 matte grey powder coat (CM-101) **G**

#### Lamping\*

2700 K LED **27**  
 3000 K LED **30**  
 3500 K LED **35**  
 4000 K LED **40**

#### Light Distribution and Driver Options

##### Uplight & Downlight

120-277 V AC input voltage  
 Standard output - 1130 Lumens (source) **P1**  
 120 V input: TRIAC, ELV & 0-10 V dimmable  
 240 & 277 V input: only 0-10 V dimmable  
 Reduced output - 540 Lumens (source) **PR**  
 Nondimmable

##### Downlight Only - Dark Sky Compliant\*

120-277 V AC input voltage  
 Standard output - 1130 Lumens (source) **D1**  
 120 V input: TRIAC, ELV & 0-10 V dimmable  
 240 & 277 V input: only 0-10 V dimmable  
 Reduced output - 540 Lumens (source) **DR**  
 Nondimmable

\*2700 K & 3000 K downlight only options are dark sky compliant.



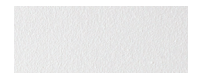
marine grade brushed stainless steel (CM-102)



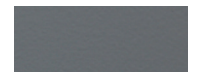
antique bronze (CM-103)



textured black powder coat (CM-099)



textured white powder coat (CM-100)



matte grey powder coat (CM-101)