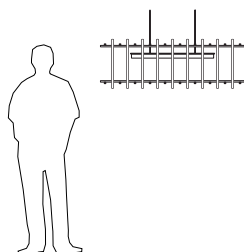
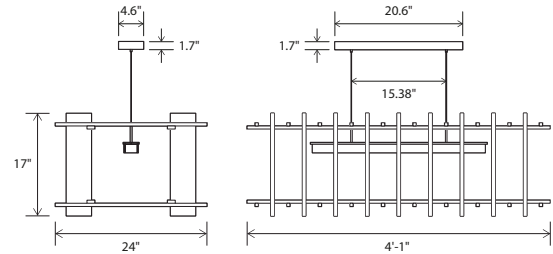


The Arca is an experiment with density and mass. As one moves around the room, the fixture morphs from a commanding presence of solid walnut into a graceful bar of light surrounded by an elegant porous cage.

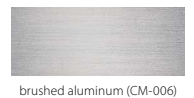
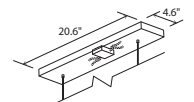
Nick Sheridan,
Designer



Arca linear pendant



Dimensions: 4'1" x 24", 17"
 Materials: solid wood, aluminum, polymer
 Product weight: 20 lb
 Light source: integrated LED
 Light output: 1720 Lumens (source)
 Light color: 2700 K or 3500 K
 Color accuracy: 90+ CRI
 Power usage: 16 W
 Dimmable (see driver below)
 Linear canopy included
 Canopy dimensions: 20.6" x 4.6" x 1.7"
 Canopy color matches fixture's metal color
 Wood canopy covers are available:
 Walnut (CM-001) cover: part # 60-241-001W
 Dark Stained Walnut (CM-002) cover: part # 60-241-001D
 White Washed Oak (CM-095) cover: part # 60-241-001O
 See website for more canopy information
 6'-0" drop length, field adjustable
 Suitable for a sloped ceiling
 Wood grain will vary
 Specifications subject to change



MATERIAL & FINISH OPTIONS

	Arca part # 07-120-	
Metal Finish		A
brushed aluminum (CM-006)		B
black anodized aluminum (CM-007)		
Wood Body		W
walnut (CM-001)		D
dark stained walnut (CM-002)		
Lamping*		27
2700 K LED		35
3500 K LED		
Driver		P1
AC Input Voltage Range: 120-277 V		
120 V input: TRIAC, ELV & 0-10 V dimmable		
240 & 277 V input: only 0-10 V dimmable		

Includes: white polymer shade (CM-052) and frosted polymer diffuser (CM-024)

*Available in 3000K, 4000K and other color temperatures upon request.