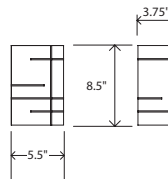




Clau
sconce



Dimensions: 8.5" x 5.5" x 3.75"
 Materials: solid wood, polymer
 Product weight: 4 lbs
 Energy efficient LED light source
 Light output: 1130 Lumens (source)
 Light color: 2700 K (warm) or 3500 K (cool)
 Color accuracy: 90+ CRI
 LED power consumption: 13W
 Dimmable (see driver below)
 Wood grain will vary
 Specifications subject to change



walnut
(CM-050)



dark stained walnut
(CM-002)



MATERIAL & FINISH OPTIONS

Clau sconce part #03-150-

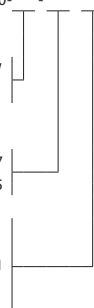
Wood Body

walnut (CM-050) W
 dark stained walnut (CM-002) D

Lamping

LED 2700 K 27
 LED 3500 K 35

120-277VAC input voltage
 0-10V dimming
 TRIAC and ELV dimming at 120VAC only P1



Includes

frosted polymer (CM-024)

J-box centered behind fixture
 Also available in pendant version



The Claudio sconce showcases the beautiful natural walnut wood grain and sets it against the rigorous slits cut in each face as they wrap around the simple, clean shade form. A beautiful glow emanates from each slit, showing the striking rectilinear composition, in which all three sides are unique.

Nick Sheridan
 Designer

